



SURFACE REINFORCEMENT APPLICATION

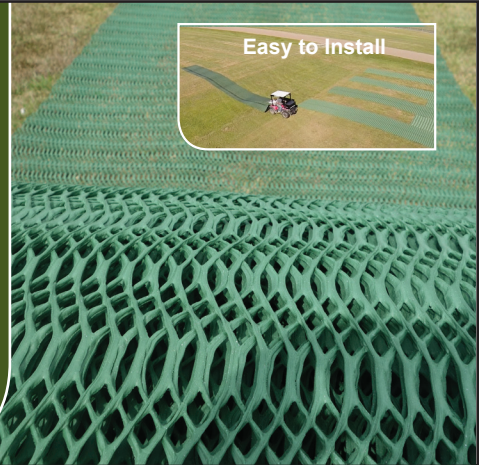


GrassGuard[®] www.grassguard.biz Grass Reinforcement Mesh

GrassGuard[®] Surface Reinforcement

GrassGuard[®], grass reinforcement mesh, is a flexible, yet tough, extruded polyethylene mesh designed for installation directly onto existing grass surfaces to reinforce, stabilize and strengthen. GrassGuard[®] is available in HD (Heavy Duty), SD (Standard Duty), and HDX (Heavy Duty with a grid backing). Applying GrassGuard[®] as a surface reinforcement is ideal for areas where a grassy surface needs to be maintained while at the same time being utilized for parking or pedestrian traffic. Surfaces once prone to rutting and wear, become stabilized and strengthened, allowing the intended use to continue. GrassGuard[®] for surface reinforcement is also the solution for staying GREEN. GrassGuard[®] is the environmentally friendly way to reinforce a large area while maintaining its natural appearance.

PRODUCT	Thickness (in)	ROLL SIZES AVAILABLE
GrassGuardSD (Standard Duty) Scour protection, light traffic areas, walkways, bike paths, handicap access	0.43"	3.5' x 33' 3.5' x 66'
GrassGuardHD (Heavy Duty) Heavier traffic areas, parking lots, R.V. parking/bays, equestrian paths, landing pads, taxiways	0.55"	7.0' x 33' 7.0' x 66'
GrassGuardHDX (Heavy Duty Xtra) (Heavy Duty with a TRIAX TX160 Geogrid backing) Areas where additional reinforcement may be required	0.56"	Master Roll HD & SD Only 7' x 350'



Surface Reinforcement Categories



- Grass / Overflow Parking
- Pedestrian / Bike Paths
- Handicap Grass Access Routes
- Equestrian Surface Reinforcement
- Shoulder / Median Reinforcement
- R.V. Access, Bays, Parks
- Landing Pads / Taxiways
- Vegetated Shoreline Access
- Maintenance Vehicle Access Stabilization
- Canoe / Small Craft Launch

Installation is Easy!

Installation of GrassGuard[®] is easy. After cutting the grass short, GrassGuard[®] is unrolled and secured to the surface using sod staples or pins.

GrassGuard[®] works by allowing the grass to grow through the mesh. This interlock protects the grass root zone helping to prevent wear and rutting.

After installation, it is best if the area remains unused until the grass has grown through the mesh and a strong interlock has been achieved. Depending on the location of installation and the growing season at the time, this could be anywhere from a few weeks to a few months.

Use GrassGuard[®] on your grass turf in place of concrete, gravel, etc. Unlike concrete, GrassGuard[®] is permeable, allowing water to continue to flow around and through it, all while maintaining its natural appearance.



GrassGuard[®] (225) 273-9600 • 800-848-4500 • 510 O'Neal Lane Ext., Baton Rouge, LA 70819

GrassGuard may change product specifications without notice. The GrassGuard system is suitable for use in the application described in our literature and on our website, provided proper installation and engineering principles are followed. Professional engineering should be consulted before installation of GrassGuard units to assure proper design. ALL EXPRESSED OR IMPLIED WARRANTIES, INCLUDING THOSE OF MERCHANTABILITY AND FITNESS FOR A PARTICULAR PURPOSE ARE DISCLAIMED.



SCOUR PROTECTION APPLICATION



GrassGuard® www.grassguard.biz Grass Reinforcement Mesh

GrassGuard® Scour Protection

Applying GrassGuard® for scour protection is an aesthetically appealing and economical way to replace hard armor erosion control structures. GrassGuard® grass reinforcement mesh interlocks with the natural vegetation of the application area reducing sediment loss and improving downstream water quality while fitting naturally into the environment.

GrassGuard® is a flexible, yet tough, long lasting extruded polyethylene mesh. GrassGuard® is designed with an open space structure that allows vegetation and grass to grow uniformly. After installation, the reinforced area will appear as a grassed or natively vegetated surface, reinforcing the soil against erosion. GrassGuard® for scour applications is also the solution for staying **GREEN**. GrassGuard® is the environmentally friendly way to stabilize an erosion prone area while maintaining its natural appearance.

PRODUCT	Thickness (in)	ROLL SIZES AVAILABLE		
Standard Duty (SD) Scour protection, light traffic areas, walkways, bike paths, handicap access	0.43"	7' x 33'	3.5' x 33'	Master Roll 7' x 350'
		7' x 66'	3.5' x 66'	

Scour Protection Categories



- Vegetated Erosion Control
- Stormwater Pipe Outfall
- ConveyanceChannel
- Slope Stabilization
- Streambank / Shoreline Reinforcement
- Dam / levee overtopping stabilization
- Detention pond emergency outflow weir
- Vegetated shoreline access

Installation is Easy!

GrassGuard® is easily installed by unrolling and anchoring the rolls in place using sod staples or pins. GrassGuard® can be easily cut on site. After installation, GrassGuard® promotes the growth of a natural vegetated area by interlocking with the surrounding vegetation, this helps prevent erosive water from displacing particles.

Growth of vegetation will typically be between a few weeks or months depending on growing season. Regular mowing may resume once vegetation has established with the GrassGuard® grass reinforcement mesh.



GrassGuard® can be used in conjunction with turf reinforcement mats (TRM) or articulated concrete mattresses to further enhance stabilization and reinforcement. Industrial Fabrics, Inc., has a full engineering staff to help with your design and application needs.

Full installation guidelines are available.

GrassGuard® (225) 273-9600 • 800-848-4500 • 510 O'Neal Lane Ext., Baton Rouge, LA 70819

GrassGuard may change product specifications without notice. The GrassGuard system is suitable for use in the application described in our literature and on our website, provided proper installation and engineering principles are followed. Professional engineering should be consulted before installation of GrassGuard units to assure proper design. ALL EXPRESSED OR IMPLIED WARRANTIES, INCLUDING THOSE OF MERCHANTABILITY AND FITNESS FOR A PARTICULAR PURPOSE ARE DISCLAIMED.



PRODUCT LINE

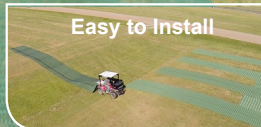
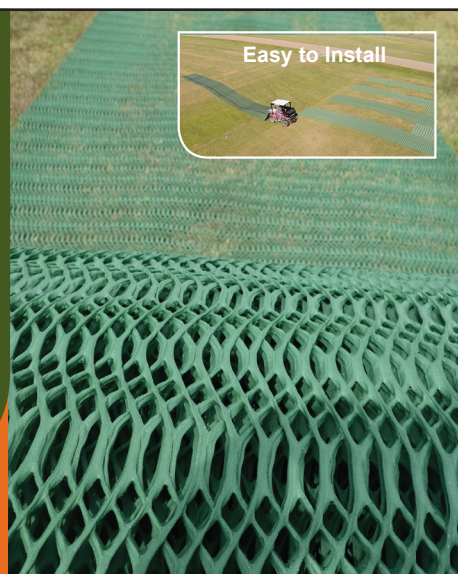
GrassGuard[®]

www.grassguard.biz

Grass Reinforcement Mesh

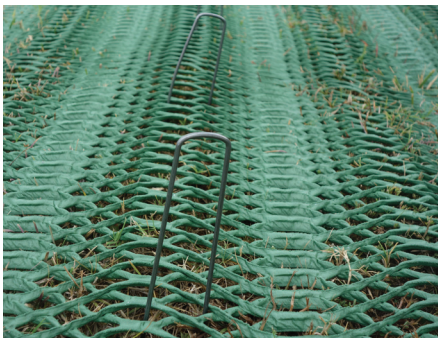
A Product by Industrial Fabrics, Inc.

PRODUCT	Thickness (in)	ROLL SIZES AVAILABLE
GrassGuardSD (Standard Duty) Scour protection, light traffic areas, walkways, bike paths, handicap access	0.43"	3.5' x 33'
GrassGuardHD (Heavy Duty) Heavier traffic areas, parking lots, R.V. parking, access bays, equestrian paths, landing pads, taxiways	0.55"	3.5' x 66'
GrassGuardHD^X (Heavy Duty Xtra) (Heavy Duty with a TRIAX TX160 Geogrid backing) Areas where additional reinforcement may be required	0.56"	7' x 33'
Master Rolls Only available in SD or HD.	0.43" or 0.55"	7' x 66'
		7' x 350'



Accessories

EASY, QUICK INSTALLATION - NO DIGGING!



SOD STAPLES

Perfect for use in grassy, landscaped, or wooded areas.

Specifications:

- 1000 or 500 staples per box (depending on size)
- 60 boxes per pallet
- 6" x 1" x 6" 11 gauge wire
- 8" x 1" x 8" (500/box) 11 gauge wire*
- 8" x 2" x 8" (500/box/) 11 gauge wire*

*8 gauge available by special order



SOD PINS

Perfect for use in grassy, landscaped, wooded or firmer areas.

Specifications:

- 100/box
- Size: 12" with washer



GrassGuard[®] (225) 273-9600 • 800-848-4500 • 510 O'Neal Lane Ext., Baton Rouge, LA 70819

GrassGuard may change product specifications without notice. The GrassGuard system is suitable for use in the application described in our literature and on our website, provided proper installation and engineering principles are followed. Professional engineering should be consulted before installation of GrassGuard units to assure proper design. ALL EXPRESSED OR IMPLIED WARRANTIES, INCLUDING THOSE OF MERCHANTABILITY AND FITNESS FOR A PARTICULAR PURPOSE ARE DISCLAIMED.